

## Drilling Unit AB 1300 T | AB 1300 T Climb



### Options for all systems

- Angle indication
- Dust collector
- Compressor on the excavator
- PLC automatic
- Wimmer Cockpit
- Reinforced feed
- Single rod changer (not with Climb-Version)

### Standard equipment

- ✓ not endlessly rotatable, 90° tiltable
- ✓ independant electric power supply
- ✓ Radio remote control - all drilling functions proportionally controlled
- ✓ Blank firing protection
- ✓ Anti-jamming automation
- ✓ Hollow protection

All rights and technical modifications reserved. Protected by copyright. Misprints and printing errors reserved. Version 3/22

WIMMER Hartstahl GmbH & Co KG und WIMMER Felstechnik GmbH  
Industriestraße 3, A-5303 Thalgau, AUSTRIA, Tel. +43 (0)6235 6655-0

office@wimmer.info

[www.wimmer.info](http://www.wimmer.info)

## Drilling Unit AB 1300 T | AB 1300 T Climb



### Range of application

- Injection anchor drillings
- Anchor and blast hole drillings
- Down-the-hole drilling

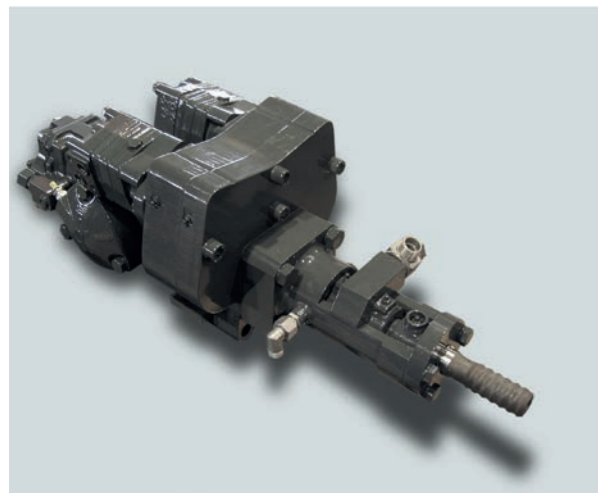
### Ultra-light drilling unit for excavators >8 tons

- Attachment to crawler excavators and walking excavators
- Large selection of carriage - hammer - combination
- Light and stable high performance profile
- Large standard equipment package, many additional options



## Technical Details AB 1300 T | AB 1300 T Climb

	AB 1300 T-1 530L	AB 1300 T-1 RD 106	AB 1300 T-4	AB 1300 T-12	AB 1300 T-20	AB 1300 T-20-D
<b>Drill Hammer</b>	530 L	RD106	WHL 300	WHD 300 - 12	WHD 1002	RH 200 Drehantrieb
<b>Weight (kg)</b>	ca. 890   1010	ca. 850   970	ca. 930   1050	ca. 980   1100	ca. 960   1080	ca. 910   1030
<b>Standard   Climb</b>						
<b>Drilling diameter max. (mm)</b>	45	45	63	63 / 89 (anchor)	120 (anchor)	130 (down-the-hole)
<b>Torque (Nm)</b>	295	100	400	600/1200 switchable	1060 / 2120 switchable	1060 / 2120 switchable
<b>Drilling Unit- Shenk adapters</b>			<b>Drilling Unit- Shenk adapters</b>			
<b>Blasthole drilling</b>	R28, R32	Standard: 22 – 7/8" Optional: R23-R28	Standard: R32 Optional: R38, T38	R32, R38, T38	R32, R38, T38	-
<b>Anchor drillings</b>	-	-	-	R32,R38,T45, Titan30 - 40	R32, R38, R44, Titan 30 - Titan 40	-
<b>Down-the-hole-drilling</b>	-	-	-	-	API 2 3/8"	API 2 3/8"
<b>Rod length (mm)</b>	3050   3050	4000   4000	3050   3050	3050   3050	3050   3050	3000   3050
<b>Standard   Climb</b>						
<b>Total length (mm)</b>	5060   5060	5060   5060	5060   5060	5060   5060	5060   5060	5060   5060
<b>Standard   Climb</b>						
<b>Oil supply (L/ min)</b>	100 @ 140 bar	85 @ 180 bar	120 @ 160 bar	140 @ 160 bar	125 @ 200 bar	95 @ 200 bar
<b>Required motor performance (kW)</b>	29	32	40	47	52	40
<b>Oil pressure @excavator (bar)</b>	200	200 - 220	220	220	220	250
<b>Carrier to</b>	> 8	> 8	> 10	> 8	> 12	> 8
<b>Execution</b>			<b>Execution</b>			
<b>Rotation/Tilting</b>	360° not endlessly rotatable/ 90° tiltable	360° not endlessly rotatable/ 90° tiltable	360° not endlessly rotatable/ 90° tiltable	360° not endlessly rotatable/ 90° tiltable	360° not endlessly rotatable/ 90° tiltable	360° not endlessly rotatable/ 90° tiltable
<b>Feed shift (mm)</b>	550   780	550   780	550   780	550   780	550   780	550   780
<b>Standard   Climb</b>						
<b>Clamping device</b>	single	without	single	single	single	single



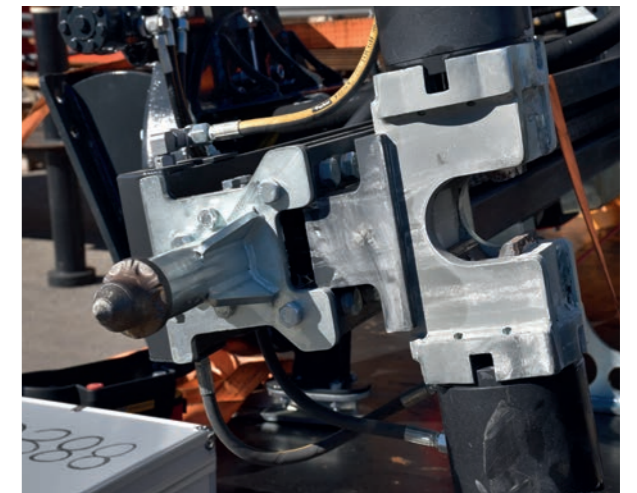
WHL 300 T12



Eurodrill WHD 1002 hammer



Functional hose guide



Rod clamping as standard