

Hydraulic breakers WH



„State-of-the-art“ breaker technology

Housing made from bended parts, no weld seam at the edge

Connectors and boring for central greasing prepared*

Hydraulic impact for a constant acceleration of the piston*

No-load protection by a hydraulic oil cushion between cylinder and piston

Three point tool bearing for an exact tool guidance and less wear

* valid for the models WH5 up to WH80



ATTENTION: the hydraulic values indicated here after are not to be considered for the regulation of the excavator – please use the instructions!

Model	WH02-A	WH 4	WH 5	WH 6	WH 8	WH 10	WH 12	WH17-A
Impact principle	Gas impact	Gas impact	Oil impact	Oil impact	Oil impact	Oil impact	Oil impact	Oil impact
Operating weight*, kg	110	200	250	380	420	655	760	1.005
Beat frequency/min	600-1150	450-1100	500-950	520-1000	500-900	350-700	390-700	400-700
Oil flow, l/min	20-35	30-70	30-60	50-100	50-100	60-120	70-130	70-130
Working pressure, bar	85-150	100	120	120	120	125	125	135
Chisel Ø, mm	50	68	70	75	85	95	100	115
Carrier weight, to	1-3	2,5-6	2,5-6	3-8	4-10	7-13	9-15	14-20

Model	WH22-A	WH26-A	WH29-A	WH35A	WH42-A	WH55-A	WH65-A	WH80-A
Impact principle	Oil impact	Oil impact	Oil impact	Oil impact	Oil impact	Oil impact	Oil impact	Oil impact
Operating weight*, kg	1.410	1.790	1.907	2.115	2.820	3.615	4.570	6.700
Beat frequency/min	360-650	350-550	350-550	330-525	320-520	320-510	300-420	285-400
Oil flow, l/min	100-180	120-180	160-230	180-250	170-300	200-300	250-340	300-400
Working pressure, bar	135	135	140	140	140	140	140	150
Chisel Ø, mm	125	135	145	150	165	175	190	210
Carrier weight, to	18-26	22-29	25-32	29-40	33-50	40-70	45-70	60-100

* Weight incl. tool, without adapter bracket

Further advantages

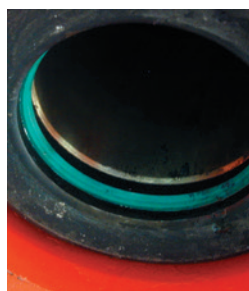
- ✓ Drum mounted floating, sound and vibration damped
- ✓ Buffer on the housing bottom in addition to lateral buffer elements



No weld seams at the edges, no cracks of the housing



No screw cap, connections easily accessible



Inner socket in different materials available



Robust protective housing for the lubricating cartridge



Especially for the Tunnel version: dust cover

WIMMER Hartstahl GmbH & Co KG and WIMMER Felstechnik GmbH
 Industriestraße 3, A-5303 Thalgau, AUSTRIA, Tel. +43 (0)6235 6655-0, Fax DW-18

WIMMER International CZ s.r.o., Rudolfovska 170 a, 370 01 České Budějovice,
 Tel. +420 387 203 735, Fax +420 387 203 736

office@wimmer.info

www.wimmer.info



Authorized WIMMER Dealer: